

Muddy River Reserve Weed Management (2011-NPS-915A)

2013 MSHCP Annual Project Progress Report
Symposium

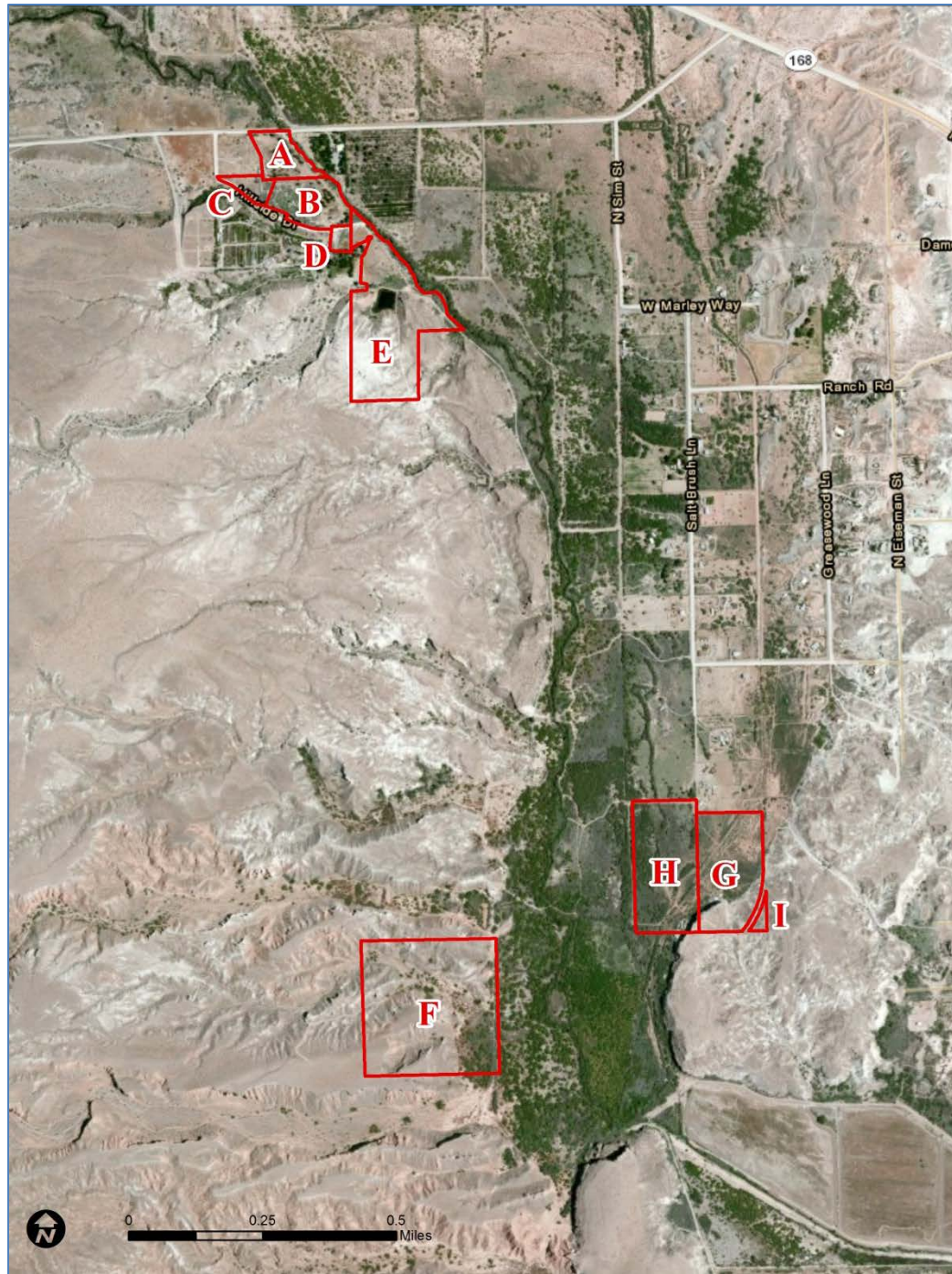
Presenter: Curt Deuser, National Park Service
Lake Mead Exotic Plant Management Team

Project Overview

- Three year project interlocal agreement approved in late February 2013
- Conduct inventories of non-native vegetation and implement weed treatments
- Goal and Objective: Support vegetation mgt and maintenance activities along the Muddy River for enhancement of native riparian species of concern within the MSHCP

Project Activities

- March/April 2013: Conducted winter weed surveys and weed treatments
- June/July 2013: Conducted spring/summer weed surveys and treatments
- Mapping plant populations with GPS and processing into GIS (NAWMA Standards)
- Entering Data
- Labeling Photos



Clark County Muddy River Reserve Properties

On the ground survey on foot



Upland



Terrace/Edge/Breaks



Unit E



View of Unit H/G



Looking West from Unit G into H



Unit F looking East



Weed Information

- 18 exotic plant species detected
- Applied a total of 7.47 gallons of herbicide (242.5 gallons of mix)
- Selectively applied to targeted plants/spot foliar application with backpack sprayers
- Herbicides: Round-up Pro, Weedmaster, Weedar 64

Muddy River Reserve Weed Species List

Species	Total Inventoried Acres	Infested Acres	Gross Infested Acres	Treated Acres
<i>Acroptilon repens</i> Russian knapweed	117	0.005	20.9	0.005
<i>Atriplex semibaccata</i> Australian saltbush	117	0.16	12.9	0.15
<i>Bassia hyssopifolia</i> fivehook bassia	117	0.001	3.2	0.001
<i>Bromus rubens</i> red brome	117	2.0	38.1	N/A
<i>Bromus tectorum</i> cheat grass	117	0.36	11.2	N/A
<i>Centaurea melitensis</i> Malta starthistle	117	0.02	22.9	0.02
<i>Chorispora tenella</i> blue mustard	117	0.0002	0.1	N/A
<i>Convolvulus arvensis</i> field bindweed	117	0.05	9.7	0.05
<i>Cynodon dactylon</i> Bermudagrass	117	0.27	21.0	N/A
<i>Erodium cicutarium</i> redstem stork's bill	117	0.21	17.0	0.21
<i>Lactuca serriola</i> prickly lettuce	117	0.004	9.3	0.004
<i>Malcolmia africana</i> African mustard	117	1.76	73.6	0.52
<i>Salsola kali</i> Russian thistle	117	0.14	10.8	0.14
<i>Sisymbrium irio</i> London rocket	117	1.65	18.3	1.65
<i>Tamarix ramosissima</i> saltcedar	117	7.1	43.1	0.01
TOTAL SPECIES ACRES	117	13.7	312.1	2.8

Australian saltbush (*Atriplex semibaccata*)



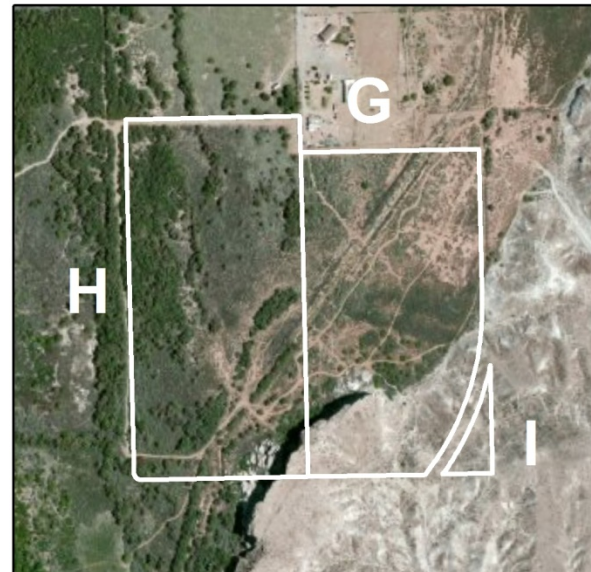
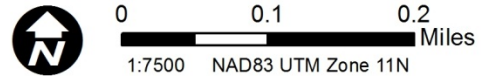
Clark County Muddy River Reserve March 2013

Atriplex semibaccata
Australian saltbush

Gross Infested: 12.9 acres

 **Infested:** 0.16 acres

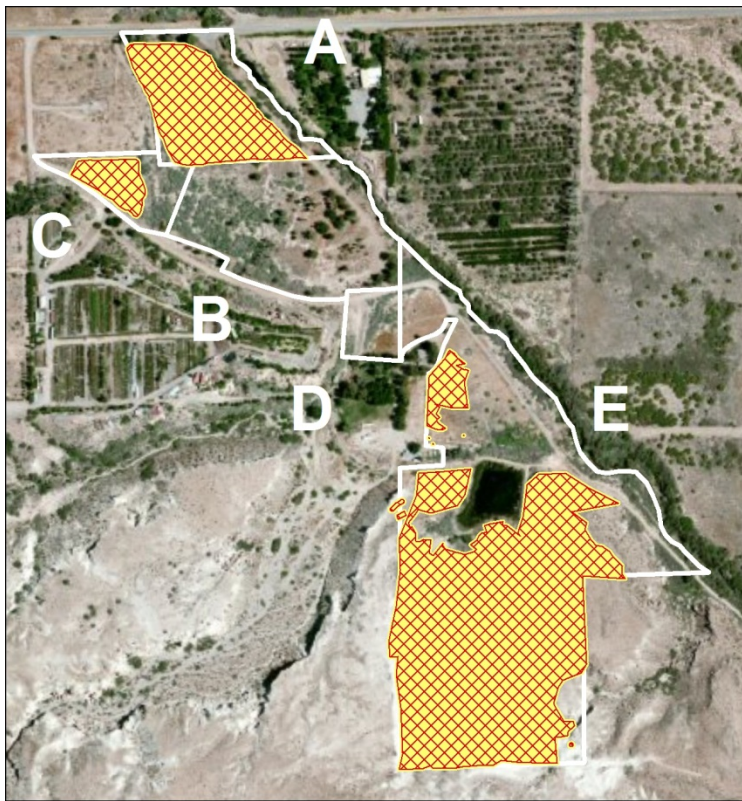
 **Treated:** 0.15 acres



African Mustard (*Malcomia africana*)



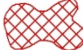
Clark County Muddy River Reserve March 2013



Malcolmia africana
African mustard

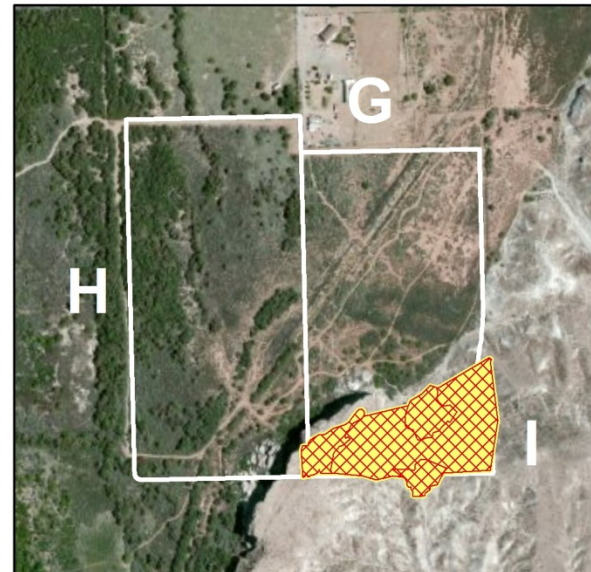
Gross Infested: 73.6 acres

 **Infested:** 1.76 acres

 **Treated:** 0.52 acres



0 0.1 0.2 Miles
1:7500 NAD83 UTM Zone 11N



Treating (*MAAF*)



MAAF mixed with natives



Russian Knapweed (*Acroptilon Repens*)



Clark County Muddy River Reserve March 2013



Acroptilon repens

Russian knapweed

Gross Infested: 20.9 acres



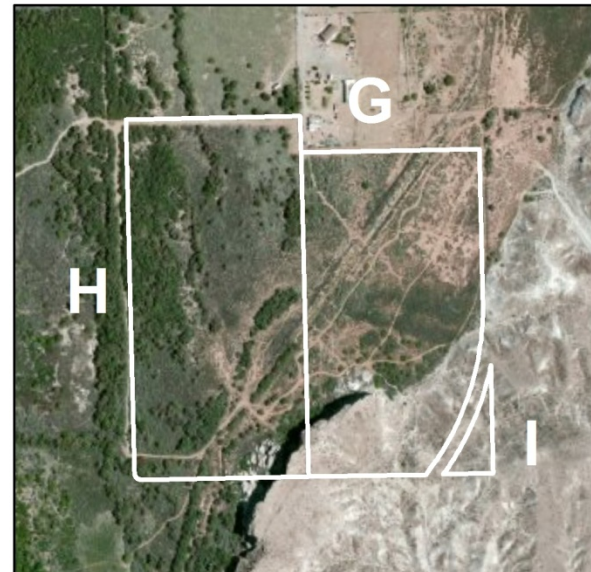
Infested: 0.005 acres



Treated: 0.005 acres

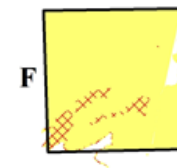
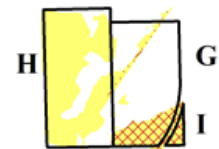
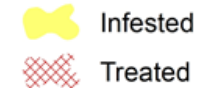
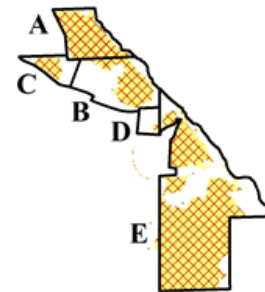


0 0.1 0.2 Miles
1:7500 NAD83 UTM Zone 11N



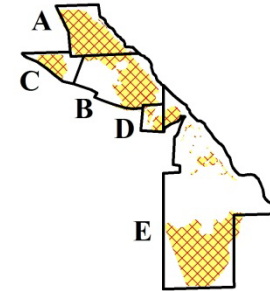
Winter Weed Control

Species	Total Inventoried Acres	Infested Acres	Gross Infested Acres Treated	Treated Acres
<i>Acroptilon repens</i> Russian knapweed	117	0.005	20.9	0.005
<i>Atriplex semibaccata</i> Australian saltbush	117	0.16	12.9	0.15
<i>Bassia hyssopifolia</i> fivehook bassia	117	0.001	3.2	0.001
<i>Bromus rubens</i> red brome	117	2.0	38.1	N/A
<i>Bromus tectorum</i> cheat grass	117	0.36	11.2	N/A
<i>Centaurea melitensis</i> Malta starthistle	117	0.02	22.9	0.02
<i>Chorispora tenella</i> blue mustard	117	0.0002	0.1	N/A
<i>Convolvulus arvensis</i> field bindweed	117	0.05	9.7	0.05
<i>Cynodon dactylon</i> Bermudagrass	117	0.27	21.0	N/A
<i>Erodium cicutarium</i> redstem stork's bill	117	0.21	17.0	0.21
<i>Lactuca serriola</i> prickly lettuce	117	0.004	9.3	0.004
<i>Malcolmia africana</i> African mustard	117	1.76	73.6	0.52
<i>Salsola kali</i> Russian thistle	117	0.14	10.8	0.14
<i>Sisymbrium irio</i> London rocket	117	1.65	18.3	1.65
<i>Tamarix ramosissima</i> saltcedar	117	7.1	43.1	0.01
TOTAL SPECIES ACRES	117	13.7	312.1	2.8



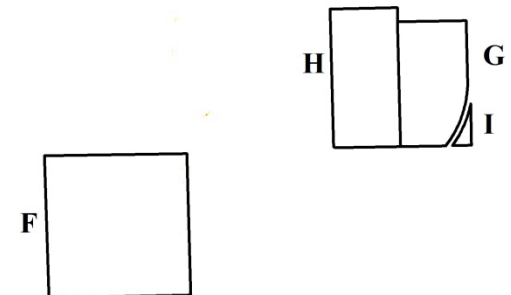
Summer Weed Control

Species	Total Inventoried Acres	Infested Acres	Gross Infested Acres Treated	Treated Acres
<i>Acroptilon repens</i> Russian knapweed	81	0.04	11.8	0.04
<i>Atriplex semibaccata</i> Australian saltbush	81	0.73	11.8	0.73
<i>Convolvulus arvensis</i> field bindweed	81	0.04	9.9	0.04
<i>Kochia prostrata</i> Bassia Prostrata	81	0.04	9.9	0.04
<i>Salsola kali</i> Russian thistle	81	0.15	32.3	0.15
TOTAL SPECIES ACRES	81	1	75.7	1



 Infested
 Treated

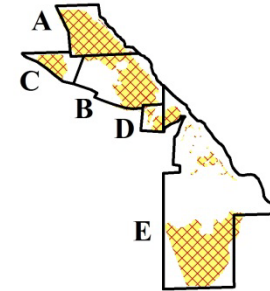
June - Units A, B, C, D, E, F



Summer Weed Control

Species	Total Inventoried Acres	Infested Acres	Gross Infested Acres Treated	Treated Acres
<i>Atriplex semibaccata</i> Australian saltbush	37	0.03	6.9	0.03
<i>Convolvulus arvensis</i> field bindweed	37	0.08	5.3	0.08
<i>Salsola kali</i> Russian thistle	37	0.01	6.3	0.01
<i>Sorghum halepense</i> Johnsongrass	37	0.03	0.13	0.03
TOTAL SPECIES ACRES	37	0.15	18.63	0.15

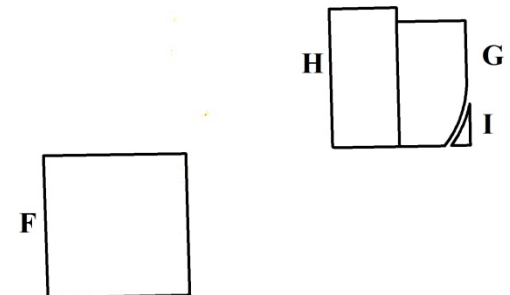
July - Units A, B, E



 Infested
 Treated

Species	Total Inventoried Acres	Infested Acres	Gross Infested Acres Treated	Treated Acres
<i>Salsola kali</i> Russian thistle	40.7	0.37	40.7	0.37
TOTAL SPECIES ACRES	40.7	0.37	40.7	0.37

July - Units A, B, C, D, E



Native plants: *Cryptantha virginensis*



Thank You

- *This work was supported by the Clark County Desert Conservation Program and funded by Section 10, as project #2011-NPS-915A, to further implement or develop the Clark County Multiple Species Habitat Conservation Plan*
- *Liz Bickmore, Clark County/MRR, NV*
- *Vanessa Truitt, NPS Data Manager*
- *EPMT Staff: Daniel Townsend, Joe Castello, Dwayne Coleman, Aimee Ross among others*